



OCTOBER IS VOCATIONAL SERVICE MONTH

<b>RI President:</b>	<b>Kalyan Banerjee</b>
<b>District Governor:</b>	<b>Kel Hobby</b>
<b>Assistant Governor:</b>	<b>Tim Gibson</b>
<b>Club President:</b>	<b>Gillian Reeve</b>
<b>Secretary:</b>	<b>Peter White</b>
<b>Treasurer:</b>	<b>Brett Roulston</b>

**PRESIDENTS REPORT**

A lot of work goes on behind the scenes at Rotary and our Club is no different. The Board has been looking at our Web Site and saw the need to give it a new look, bringing us into the modern age. We would like people to find us on the web and be impressed by what they see, then make that decision to get more information with the view to join.

Roger has been doing a mountain of work, after we had the details of a site builder, Club Runner (used by District) forwarded to us with the opportunity to trial for 60 days. We have used this time to fully explore the many benefits of using this program. It will also track attendances, member details, calendar of events and much, much, more.

On Tuesday 18 October, DGN Tim Moore will be giving us an insight into the District Website and how to navigate through it. A lot of what he will show us will be applicable to our potential new site.

Of course progress always comes at a cost, but I believe that it is an investment in the future of our club, making us more relevant in this decade. Many thanks to Roger, for his enthusiasm in taking up the reigns and driving this project

As October is Vocational Month, we need to remember the following as we help to encourage Vocational Service in our community:

Rotarians can support vocational service by

- Strengthening the emphasis on professional diversity in member recruitment
- Identifying ways to emphasize professions in club activities
- Placing a stronger emphasis on business networking with integrity at the club and district level -- which also is a means of attracting and mentoring the next generation
- Emphasizing the connection between The Four-Way Test and the Declaration of Rotarians in Businesses and Professions, and their importance to the values of Rotary

*Yours in Rotary – Gillian*

**GUEST SPEAKER**

**Bairnsdale – Then and Now**

Born and brought up in Bairnsdale, budding local historians Sandy McLeod and Beatty Blennerhassett gave Rotarians a fascinating insight into how the town has developed from humble beginnings.

Explorer Angus McMillan is believed to have been the first European to enter East Gippsland, in 1840, and he named the Mitchell River, where Bairnsdale now stands. The first European settler was F. Jones, who lived in what is now Lucknow.

Archibald Macleod - who like McMillan hailed from the Isle of Skye in Scotland - moved with his family to Gippsland in 1844 and farmed an area spanning from what is now the Mitchell River Bridge to Eagle Point. He named the town 'Bernisdale' after his birthplace and it is suggested that he may have returned after a long absence to find a number of 'bairns' (a Scottish term for babies), therefore accounting for the transformation to 'Bairnsdale'.

Macleod operated a punt service across the river and it was at this crossing point that the township began to develop, with the first blocks of land sold in 1860. The town grew due to its river location and close proximity to the sea, and it was used as a supply port for the Gippsland gold fields through to the development of the railways.

Goods were shipped into Lake King, up the Mitchell River to Bairnsdale and then carried overland. Ships also left Bairnsdale bound for Melbourne, loaded with cattle and wool, while barges conveyed wattle bark down the river to Jackson's Tannery, which commenced operations in 1876. A police station was established in 1862, with a courthouse, post office and school following six years later and the railway arriving in 1888.

Looking at agriculture, hops were cultivated in the Mitchell valley from 1868 to 1916 and attempts were made to develop an oil seed industry between 1890 and 1910.

A factory producing mining tools was opened in 1877, followed by an ice and butter plant in 1891 and a fruit cannery in 1907.

**Milestones in Bairnsdale's subsequent development:**

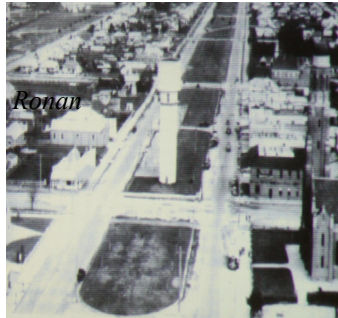
- 1885 – Introduction of gas supply to the town
- 1887 – First bridge built over the Mitchell River
- 1890 – Water supply installed
- 1912 – Private power station opened
- 1923 – Sealing of Main Street commenced
- 1927 – Electricity supply to Bairnsdale commenced
- 1939 – Sewerage system installed
- 1940 – East Gippsland Hospital opened
- 1957 – Fluorescent street lighting installed in Main Street
- 1975 – Pedestrian lights introduced
- 1983 – Traffic lights installed



OCTOBER IS VOCATIONAL SERVICE MONTH



Beatty and Sandy



Main Street Bairnsdale

Ronan

**GSE TEAM LEADER**

I am pleased to inform you that the GSE team leader to D6270 Wisconsin in April, 2012 is PP Jeff Smallacombe from RC Somerville Tyabb. I would like to sincerely thank the other applicants and encourage you to try again next year.

We now look forward to the team member interviews which will take place at the Lutheran College in Pakenham on the weekend of Sat. 22<sup>nd</sup> & Sun. 23<sup>rd</sup> October.

**Hosting the D6270 Wisconsin Team**

The team from D6270 Wisconsin is as follows:

**Team leader**

PDG Catherine (Cathy) Zimmerman

**Team members**

- Jenny Knuth - Graphic Designer
- Stacy Osten - Financial Analyst & Resource Manager
- Colleen Hahn - Liability Claims Supervisor
- Alexis Billings - Banker

The closing date for clubs wanting to host this team is Friday 11 November.

PP Lynne Westland  
GSE Chair D9820

**IMPORTANT DATES**

**Inductions:**

John Ariens ~ 11.10.1989 ~ 22 Years

**Anniversaries:**

Nil

**Birthdays**

Gillian Reeve ~ 14 October

Margaret McFarlane ~ 14 October

**ROSTER**

**OCTOBER**

Tony Murray ~ Roger McCracken ~ John Ariens

**NOVEMBER**

Geoff Johnston ~ Geoff Macfarlane ~ Ian Campbell

A reminder that if you can not make your duty please organise a replacement

**CLUB PROGRAMS**

**Tuesday 11 October 2011**

Gillian – Greece and Turkey

**Tuesday 18 October 2011**

Tim Moore DGN – Navigating the District Website, accessing and updating your information

**MARQUEE DATES**

19 November

Bairnsdale

10 December

Angling Club Marlo

**SOCIAL EVENTS**

**Tuesday 1 November 2011**

Melbourne Cup Lunch/BBQ at John and Bonnie Walker's – details to follow.

**Tuesday 22 November 2011**

Pizza Night – John and Janet's place

**OTHER DATES**

**Friday 21 October 2011**

Charity Fun Golf Day – Mixed Drop-Out Ambrose  
10.00 am for a 10.30 shotgun start  
Cost \$20.00 includes sausage sizzle and afternoon tea  
**This is a project of the Rotary Club of Yarram**  
RSVP by 15 October 2011  
Wilma 5182 5296 or Pat 51825131

**Sunday 30 October**

Avenues of Service Forum – Churchill  
Please give consideration to attending this forum and let Gillian know on Tuesday

**OAKS DAY**

**Oaks Day**



Champagne and Chicken Luncheon

VENUE: **Mechanic's Hall**

Mechanic Street,

**Lakes Entrance**

**Thursday 3rd November 2011**

**10.30am**

Ticket \$40..

**PROCEEDS benefit Gippsland Rotary Centenary House**

**AIM- TO FURNISH ROOMS IN SOON COMPLETED EXTENSIONS.**

**Contact Rhonda Wheeldon**



**ROTARY CLUB OF BAIRNSDALE INC**  
**Bulletin No. 11/ 14 - 11 October 2011**

**OCTOBER IS VOCATIONAL SERVICE MONTH**

